

40480 QA

Abs. Receive Path Calibration Check 2023-06-26 09:33:07

[Log-File](#)

Verify absolute brightness calibration

Measure Protocol: 097_HeadMatrix_all_Tra_sn.edb.

Evaluation for coil element: H1P_H1S_H2P_H2S_H3P_H3S_H4P_H4S.

SN evaluation

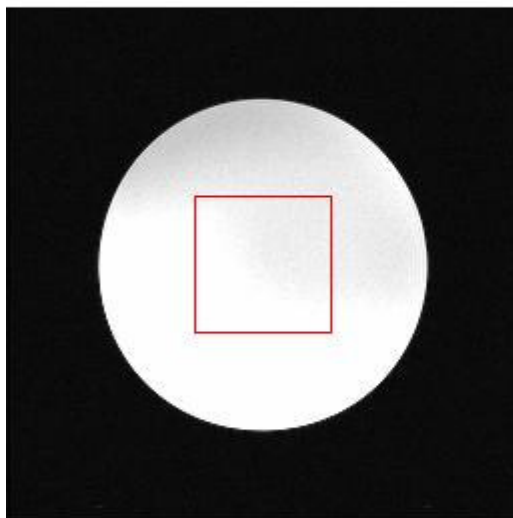
Series: 1, Image 1/1 of protocol 097_HeadMatrix_all_Tra_sn.edb

Image: file://C:/MedCom/service/html...SfpReceivePathCalAbs_Check/gfx/qa_2023-06-26-093307-1.ima

Window: 1982 Center: 991

Message:

Image Display:



SeriesLoid Local 57.0.110846

ImageNumber 1

256 * 256 (Lines * Columns)

FoV 180.0 * 180.0 (width * heigth)

TR 300.00 TE 15.00

Transversal

Patient position HFS

2023-06-26 09:34:31

sequence se_15b130

Results of coil-element H1P_H1S_H2P_H2S_H3P_H3S_H4P_H4S are in Specification!

Absolute Receive Path Calibration Results

	Value	Low Spec	High Spec
Protocol	097_HeadMatrix_Tra_sn		
Brightness	1981.70	1000.00	4000.00
S/N	72.76	50.00	
Current RxChannelCorrection Factor	1.07	0.50	1.50
Calculated RxChannelCorrection Factor	1.08	0.50	1.50

RxChannelCorrection factor is in specification.

Measure Protocol: 097_HeadMatrix_H1P_H2P_H3P_H4P_Tra_sn.edb.

Evaluation for coil element: H1P_H1S_H2P_H2S_H3P_H3S_H4P_H4S.

SN evaluation

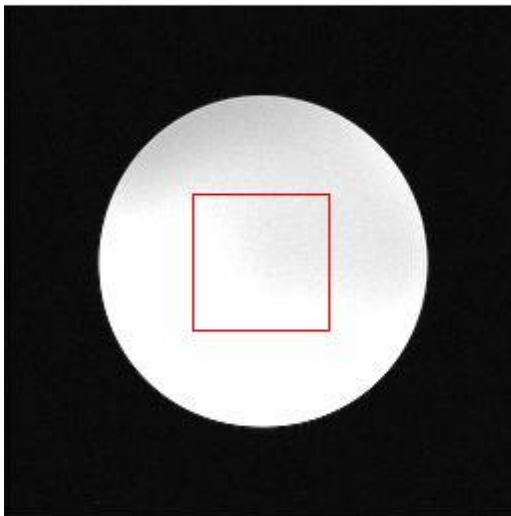
Series: 1, Image 1/1 of protocol 097_HeadMatrix_H1P_H2P_H3P_H4P_Tra_sn.edb

Image: file://C:/MedCom/service/html...SfpReceivePathCalAbs_Check/gfx/qa_2023-06-26-093307-2.ima

Window: 1989 Center: 994

Message:

Image Display:



SeriesLoid Local 57.0.116110
 ImageNumber 1
 256 * 256 (Lines * Columns)
 FoV 180.0 * 180.0 (width * height)
 TR 300.00 TE 15.00
 Transversal
 Patient position HFS
 2023-06-26 09:35:54
 sequence se_15b130

S/N and Brightness Results

	Value	Low Spec	High Spec
Protocol	097_HeadMatrix_H1P_H2P_H3P_H4P_Tra_sn		
S/N	75.13	50.00	

Brightness	1989.03	1000.00	4000.00
------------	---------	---------	---------

Results of coil-element H1P_H1S_H2P_H2S_H3P_H3S_H4P_H4S are in Specification!

Results are in specification

Program finished successfully